



Copper Creek

CONDOMINIUMS

Details

- Location: 238 4th Ave.
Kirkland WA 98033
- 6 residences, 2,171 – 2,384sf
- Completion: Q2 2025

Key Features

- Easy elevator access directly to each unit
- Available with either 2 or 3 bedrooms
- In the heart of downtown Kirkland
- Two distinct color schemes to choose from

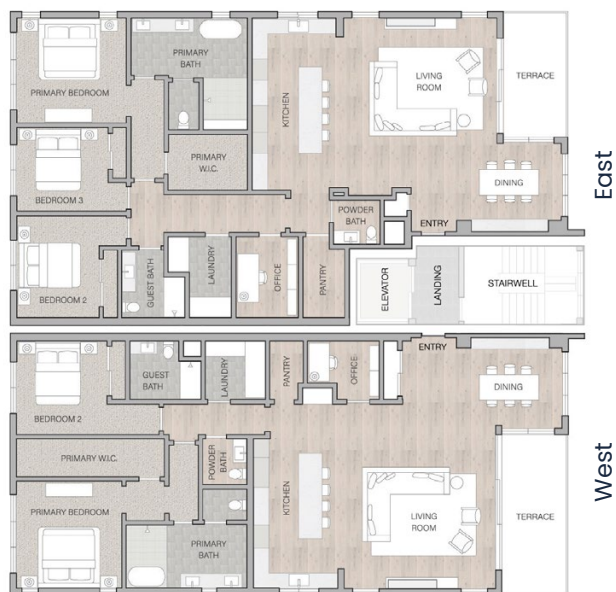
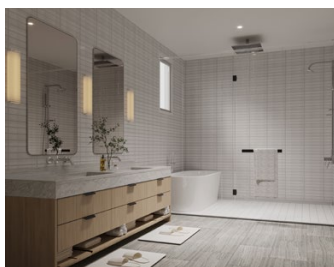
Located in the heart of downtown Kirkland, Copper Creek is a brand new building featuring six stunning, spacious condos. Each home is flooded with natural light thanks to huge south-facing windows, and the property is loaded with modern amenities like premium Thermador appliances, easy elevator access, private terraces and secured underground parking.

JUST STEPS FROM DOWNTOWN KIRKLAND

Kirkland is a lively lakeside oasis that welcomes you its with relaxed charm and showcases water views at every turn. Just a short 15-minute drive east of Seattle, the delightful downtown city center offers a pedestrian-friendly mix of locally owned coffee shops, boutiques, health and beauty spas, and award-winning restaurants. It's graced with multiple parks and pedestrian paths along the shores of beautiful Lake Washington.

Explore Copper Creek

Designed to stand out in a world of conformity, Copper Creek Condominiums have unique finishes and design details you're unlikely to find elsewhere. At Cordillera Homes, we are committed to maintaining a consistently high level of quality in everything we do, and we're proud to offer Copper Creek as a stunning example of this commitment come to life.



Spacious 2 or 3 Bedrooms

With two residences per floor and easy elevator access to each unit, Copper Creek is the dream destination for your next phase of life. Homes are between 2,171 SF and 2,384 SF, and include 2 or 3 bedrooms, and 2 baths plus a powder room. Presales are available now with building completion in Q2 2025.

Come See it in Person!

We're thrilled to be represented by Windermere Premier Properties. Please reach out to learn more or schedule a tour.

Windermere
REAL ESTATE

Premier
PROPERTIES

Matt Pelascini

206 227 5444

Randy Ginn

425 417 3515